

## XZ40-100/920 Series Hydraulic Automatic Filter Press

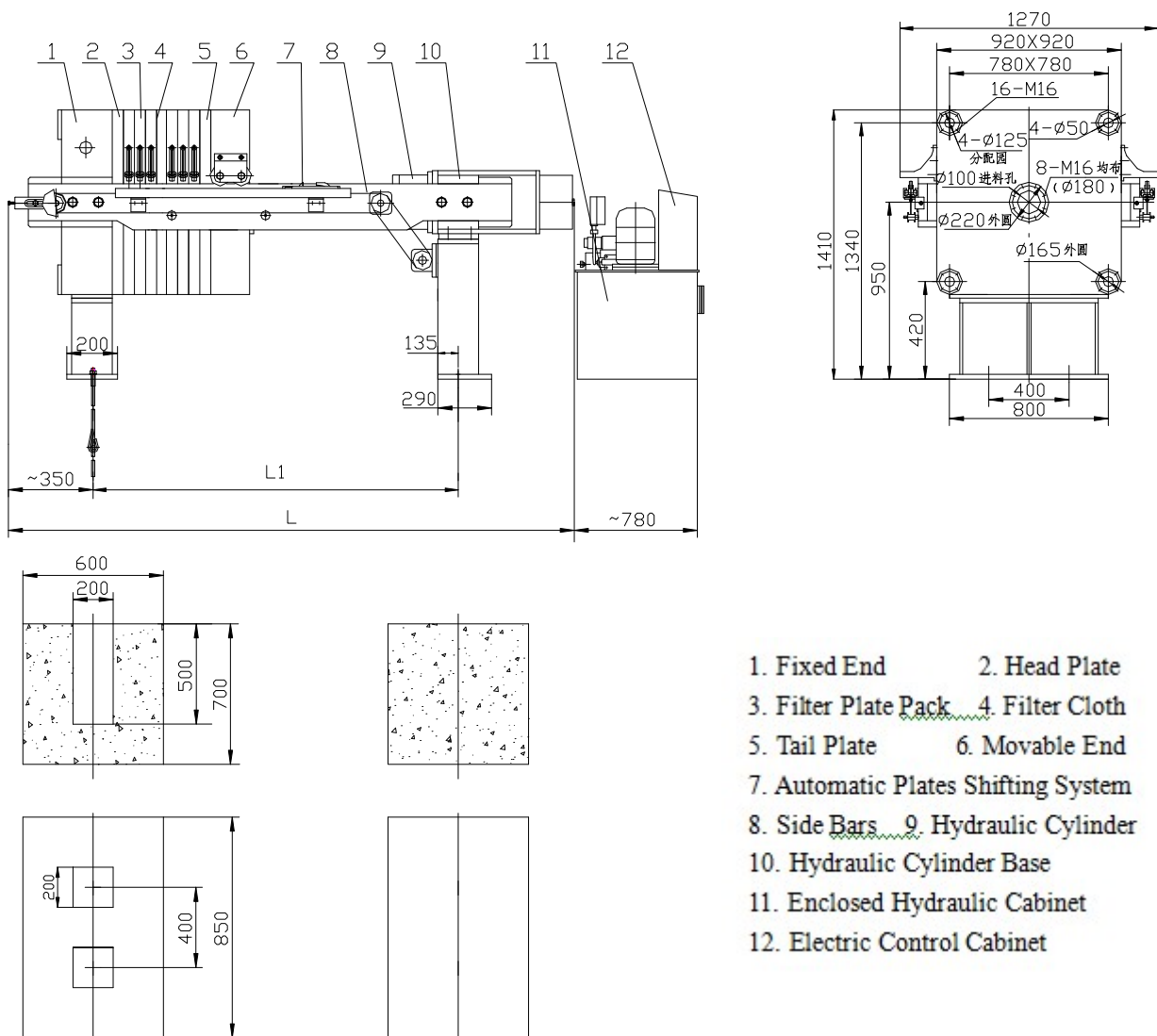
### Structure & Working Principle

This filter press basically consists of metal frame, filtration chamber, hydraulic closing system, & electric control system.

The metal frame have two side bars (8) are connected at one end to a fixed end (1) which also known as a feed head and another end to the hydraulic cylinder base (10).

Piston rod of hydraulic cylinder (9) hinged with a moving plate (6). The moving plate connected with tail plate (5) clamps the filter plate pack (3). The filter plate pack comprises a number of filter plates forming chamber for solid collection. The filter cloth (4) as a filter media is supported by the plates of plate pack. Slurry is pumped into chamber and against filter media. Liquid (the filtrate) passes through the filter cloth and exits through the filtrate ports of the plates. The solids (filter cake) collect on the surface on the filter cloth within the chamber until the chamber is full. The cake is washed or not by customers' optional. Then a plate shifting shutter helps shifting the plates to discharge the filter cakes and one filtration cycle is completed.

### Structure & diagram



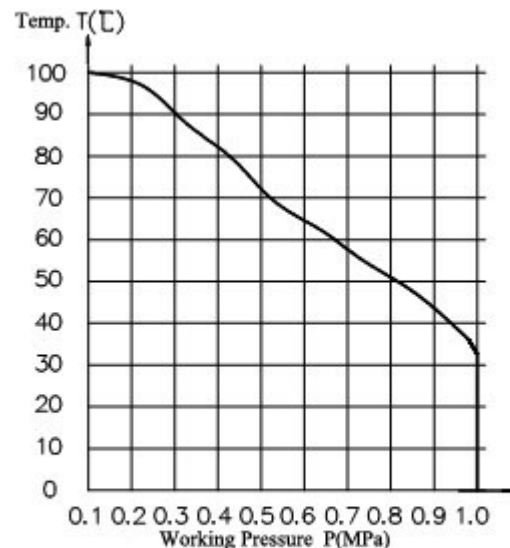
# Zhejiang Jianhua Group Filter Press Co., Ltd.

Note: 1. Washing pipes & drainage pipes as per customers' different applications.

## Performance & parameters

### Performance

Working pressure inside the filter chamber	≤1.0MPa
Working pressure of hydraulic	≤27MPa
Rated pressing force	700KN
Max. displacement of compressing plate	500mm
Max. Temperature	100℃
Rated power of Motor	1.5KW



Working Pressure-Temperature Curve

Note: High Temp. & High Pressure Plates are also available upon requests.

## Parameters

Filter Area m <sup>2</sup>	Plate Quantity PCS	Chamber Quantity PCS	Filter Cake mm	Chamber Volume m <sup>3</sup>	Dimensions mm			Machine Mass t	Pore dia. Φ mm	
					Length	Width	Height		Feed Pore φmm	Washing & Discharging Pore φ mm
40	31	32	32	0.64	3828	1270	1410	3.66	100	50
50	39	40		0.80	4316			4.05		
60	47	48		0.96	4804			4.40		
70	55	56		1.12	5292			4.81		
80	63	64		1.28	5780			5.24		
90	71	72		1.44	6268			5.62		
100	79	80		1.60	6756			6.05		

## Wearing Parts

Code	Description	Material	Quantity	Remark
GB1235-76	O type seal ring 125×5.7	Oil resistance rubber	2	
GB1235-76	O type seal ring 180×5.7	Oil resistance rubber	10	

**Note:** Parameters, dimension & structure are subject to changes without notice, hope your kindly understanding.